

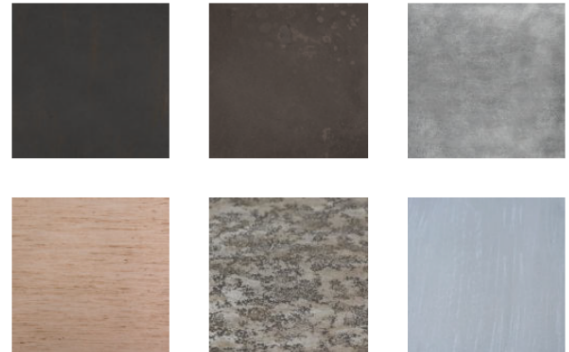
CHARLESTON FORGE FINISHES

Metal Finishes

Standard Metal Finishes



Premium Metal Finishes



About Powder Coat Painting

All our frames are powder coat painted. Powder coating is a process by which paint is applied as a powder instead of the more commonly used wet spray approach. The powder is applied to the steel frames using a special sprayer that gives the powder an electrostatic charge, which helps it adhere evenly. The frame then passes through a curing oven that heats the powder to the point where a chemical reaction occurs, simultaneously melting and drying the powder to form a highly durable covering.

There are several benefits to using powder coat. One, it covers more evenly than wet spray without the chance of running or dripping. Powder coat paint is also more durable, resists chipping better, is less likely to fade than wet spray painting, and is available in as many colors as any other painting process. On top of all these qualities, powder coat painting is far better for the environment than liquid paints as it contains no solvents.

Finish Color

All swatches have been color-corrected to match the material being represented. However due to calibration variations between monitors we cannot guarantee that the colors seen on your screen or printer exactly match the finish.

Wood Finishes & Distressing

Maple Finishes

Also called Ambrosia Maple, Wormy Maple exhibits a beautiful, contrasting grain pattern with distinct markings and worm holes created by the Ambrosia beetle. Natural Distressing highlights these natural characteristics with no other artificial distressing added. Maple tops and shelves can also be hand-planed.

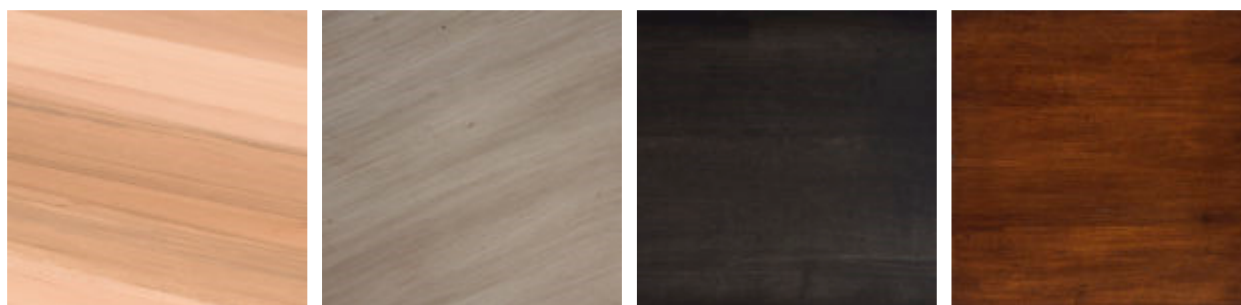


Alpine (AP-M)

Alabaster (AB-M)

Brentwood (B-M)

Cashew (CA-M)

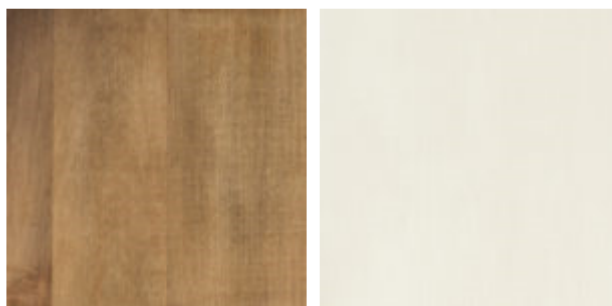


Clear Coat (CC-M)

Mica (MI-M)

Raven (R-M)

Saddle (S-M)



Wheat (W-M)

Fog (F-M)

Ash Finishes



Alabaster (AB-ASH)

Alpine (AP-ASH)

Brentwood (B-ASH)

Cashew (CA-ASH)



Clear Coat (CC-ASH)

Fog (F-ASH)

Mica (M-ASH)

Raven (R-ASH)

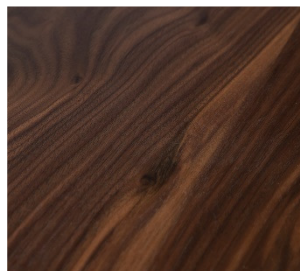


Saddle (S-ASH)

Wheat (W-ASH)

Walnut Finishes

Walnut is available with a Clear Coat finish only, emphasizing the tight grain beautiful variation of colors in the wood.

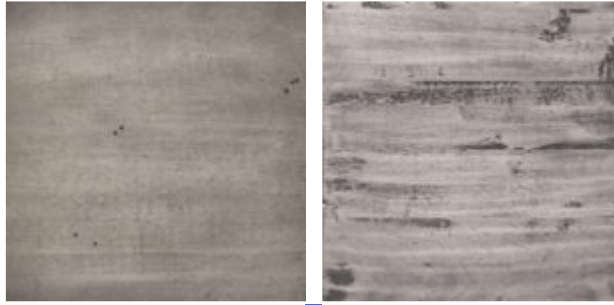


Walnut

Wood Distressing Options

Natural Distressing highlights the natural characteristics of the wood with no other distressing added. Worm holes in our Maple tops, and the associated mineral streaks, are considered part of this.

Hand-Planed Distressing means, as the name implies, that the wood has been planed by hand to create undulations in the surface of the wood. The result is an authentic, worn look.



Natural Distressing

Hand Planed

Please Note

Burnishing on Wood Tops

When choosing Alpine, Brentwood, or Wheat, it is important to note that it will display what is called "burnishing" along the outer edges. This is an intentional part of the finishing process wherein the outer edges of the top are subtly darker than the rest.

Finish Color

Please note that woods have grain and color variations caused by the growth pattern of each tree which may cause the finish on each piece to differ slightly. All swatches have been color-corrected to match the material being represented. However due to calibration variations between monitors we cannot guarantee that the colors seen on your screen or printer exactly match the finish.