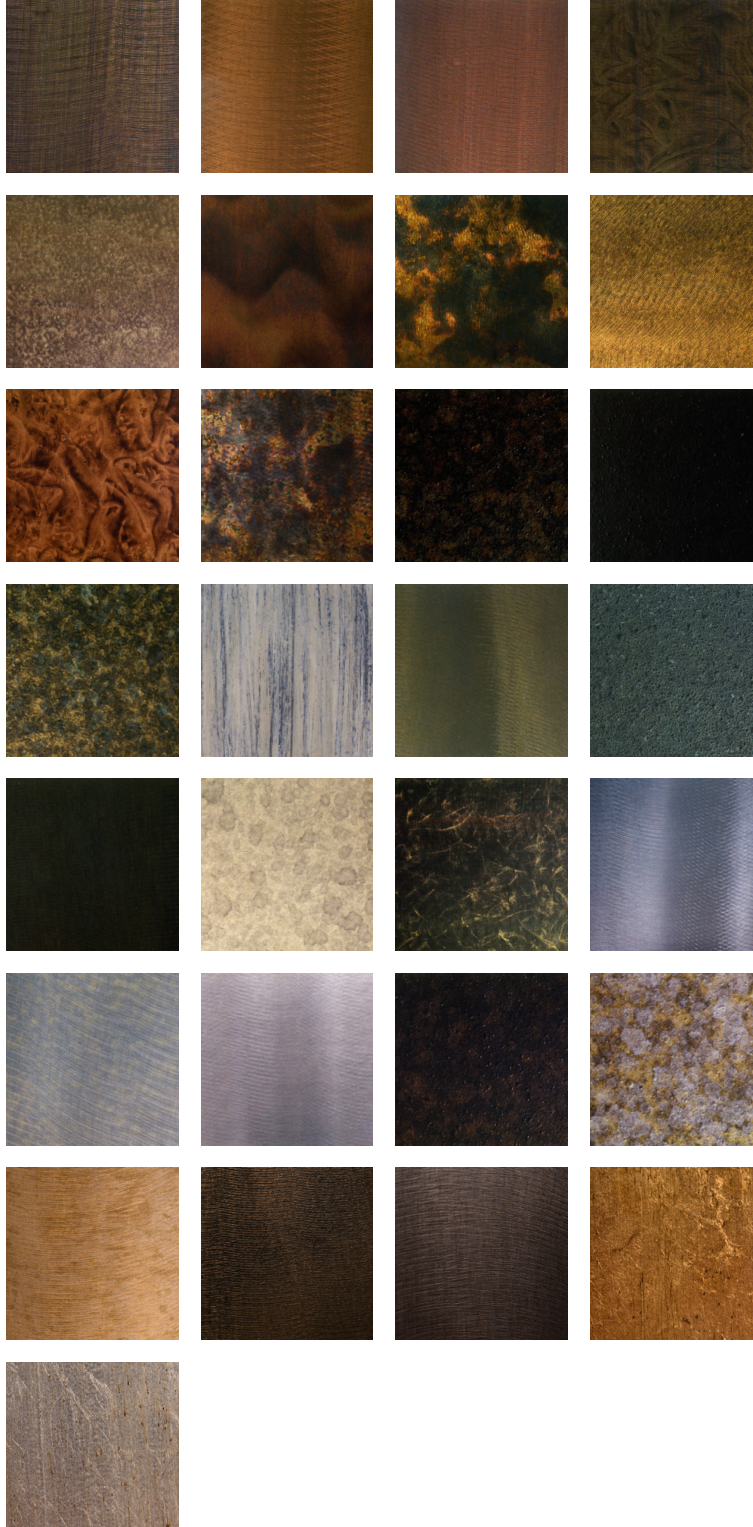


FINISHES

Unique and enticing finishes are a Kolikka signature. Our vast array of finishes cover the spectrums of cool and sophisticated to organic and earthy. With patinas and etching processes developed over decades of experimentation, our surfaces exhibit an alluring iridescence. This is achieved by color enhancing quality metal works that reflect light and depth.

Though all of our work is hand done, it is this execution that we are most proud of. We prefer finishing techniques that do not mask our honest efforts. Many manufactures cover their products with paints, fillers and heavy textures. **We would rather not compromise.**

Click on individual images to view them larger in the image gallery. Rolling over the image with your mouse while you are in the image gallery will reveal info about each finish. To close the image gallery, click the X in the upper right corner. If you are viewing on a mobile device, you can swipe through the image gallery and you can reveal more info about each finish by touching the white dot located on the right side.



SURFACES

Kolkka surface options offer a fantastic alternative to glass or stone tops. Warm tones, strong textures, organic and geometric patterns that really work to soften the look and feel.

Click on individual images to view them larger in the image gallery. Rolling over the image with your mouse while you are in the image gallery will reveal info about each surface. To close the image gallery, click the 'X' in the upper right corner. If you are viewing on a mobile device, you can swipe through the image gallery and you can reveal more info about each surface by touching the white dot located on the right side.

URBAN COMPOSITES

Inset or inseparable, very strong & does not need to be under glass. See [Tablet 44](#) for typical top surface detail.



HUMANE HIDES

Inset only, very strong, does not need to be under glass. See [Tablet 2](#) for typical top surface detail.



COUTURES

Inset only, very strong, does not need to be under glass. See [Tablet 23](#) for typical top surface detail.



CALVANO

Inset only, DOES need to be under glass. See [Tablet 25](#) for typical top surface detail.

